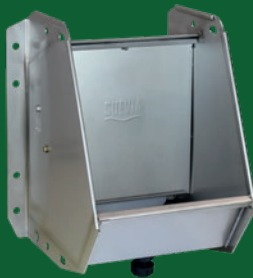




SUEVIA

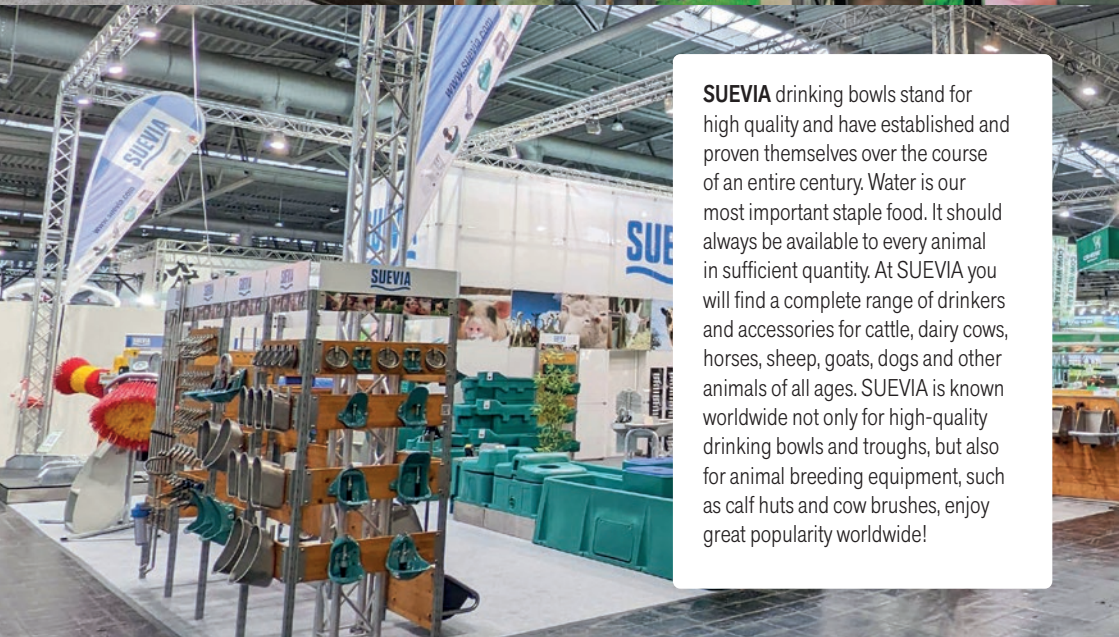
Product Guide



Ladd's

Official UK SUEVIA distributor





SUEVIA drinking bowls stand for high quality and have established and proven themselves over the course of an entire century. Water is our most important staple food. It should always be available to every animal in sufficient quantity. At SUEVIA you will find a complete range of drinkers and accessories for cattle, dairy cows, horses, sheep, goats, dogs and other animals of all ages. SUEVIA is known worldwide not only for high-quality drinking bowls and troughs, but also for animal breeding equipment, such as calf huts and cow brushes, enjoy great popularity worldwide!



PRODUCT OVERVIEW

Drinking Bowls (General)	4
Drinking Bowls for Pigs	14
Nipple Drinkers for Pigs	19
Protection Brackets & Steel Posts	22
Calf Hutches	25
Cow Brushes	27
Troughs & Drinkers	31
Feeder & Cleaning Baths	44
Bucket & Calf Accessories	45
Float Valves	46
Stainless Steel Connection Pipes	47
Accessories for Installation	49
Fittings	50

About us

Ladds has been trading in Clynderwen for over 100 years. The Davies family took over the business in 1975 and although the stock lines have increased immensely over the last 50 years, our ethos hasn't changed. Modern solutions with old fashioned values is still at the heart of the service we offer. As a family business we pride ourselves in being able to share knowledge and provide advice and product information. For more information on Ladds please visit: laddsclynderwen.co.uk



Ladds are proud to announce we are now the UK's leading distributor of SUEVIA Haiges GmbH. If you are interested in the SUEVIA product range either as a customer or becoming a stockist of the products, then please contact us for more information on 01437 563217 or visit: suevia.co.uk. We hope you enjoy browsing our latest catalogue.





DRINKING BOWLS (GENERAL)



Drinking Bowl

Model 8

Ref. 100.0008

- Large drinking bowl made of **cast iron, with white enameled interior**
- **High water flow:** continuously adjustable up to 35 l/min at 5 bar
- Simple water flow regulation possibility from outside
- Water flow can be completely shut off by means of a stirrup behind the tongue
- **3/4" male connection from all sides (360°)**
- Thanks to the robust construction and solid valve as well as to the high water flow even at low water pressure drinking bowl Model 8 can very well be used for installation on water tanks

RECOMMENDED FOR: Cattle, dairy cows, bulls, horses



Drinking Bowl

Model 10P

Ref. 100.0010

- Bowl made of **top quality AQUATHAN plastic**
- Extremely flexible, flexes on impacts, shock-resistant
- **No sharp edges, no risk of injury**
- Smoothly running brass tube valve with 1/2" male connection from the top
- Calm water flow through tube valve, **with enticement basin**
- Mod. 10P-MS1/2": Water flow regulation by enlarging the nozzle boring
- Mod. 10P-VA1/2": Water flow **continuously adjustable** from outside by means of a **regulation screw**

RECOMMENDED FOR: Calves, horses



Drinking Bowl

Model 20 with 1/2" brass valve

Ref. 100.0020

- Bowl made of **cast iron, completely enamelled**
- Smoothly running brass tube valve with 1/2" male connection from the top
- Calm water flow through tube valve, no water spillage
- Mod. 20-MS1/2": Water flow regulation by enlarging the nozzle boring
- Mod. 20-VA1/2": Water flow continuously adjustable from outside by means of a regulation screw

RECOMMENDED FOR: Cattle, horses



DRINKING BOWLS (GENERAL)

Drinking Bowl Model 60

Ref. 100.0060

- Bowl made of **cast iron, completely enamelled**
- Smoothly running brass tube valve
- **1/2" female connection** from top and bottom
- Calm water flow through tube valve, no water spillage
- With 4-hole-fixation

RECOMMENDED FOR: Cattle, horses



Drinking Bowl Model 115

Ref. 100.0115

- Large drinking bowl made of **cast iron, completely enamelled**
- High water flow of 14 l/min at 5 bar (73psi)
- Quick water flow regulation possibility under the tongue without any use of tools: for adjustment lift up the tongue and turn at the regulation screw. This way the desired water flow can even be stopped completely
- **1/2" female connection from top and bottom**

RECOMMENDED FOR: Cattle, dairy cows, bulls, horses





DRINKING BOWLS (GENERAL)



Drinking Bowl

Model 12P golden pink with 3/4" brass valve

Ref. 100.0122

Model 12P green with 3/4" brass valve

Ref. 100.0123

Model 12P black with 3/4" stainless steel valve

Ref. 100.0128

- Bowl made of **top quality AQUATHAN plastic**
- Extremely flexible, flexes on impacts, shock-resistant
- **No sharp edges, no risk of injury**
- Smoothly running tube valve in **3/4" brass or 3/4" stainless steel**
- **Female connection from top and bottom**
- Water flow **continuously adjustable** from outside by means of a **regulation screw**
- Calm water flow through tube valve

RECOMMENDED FOR: Calves, horses

Drinking Bowl with Float Valve

Model 130P (plastic) for max. 5 bar

Ref. 100.0130

- Large bowl made of **UV-resistant AQUATHAN plastic**
- Float valve allowing quick water flow
- Mod. 130P + 130P-N: with **plug** for quick drainage
- Removable cover in stainless steel
- No sharp edges, no risk of injury!
- Constant water level – simple adjustment
- 1/2" male connection from right or left hand side
- Mod. 130P-N: for low pressure up to 1 bar

RECOMMENDED FOR: Calves, horses, sheep, dogs



DRINKING BOWLS (GENERAL)

Drinking Bowl Model 135P

Ref. 100.1350

- Large bowl made of robust plastic
- **6 litre water volume**
- Float valve allowing quick water flow, max. 5 bar.
- Constant water level – simple adjustment
- ½" male connection from right or left hand side
- With rubber plug Ø30 mm for quick drainage. Can be pushed out without tools!
- **No sharp edges, no risk of injury**
- Mod. 135P-N: for low pressure up to 1 bar
- Also available as heatable version, see related products

RECOMMENDED FOR: Dogs, calves, horses, sheep



Drinking Bowl Model 16P with ¾" brass valve

Ref. 100.0163

- Drinking bowl made of premium **UV-resistant polyethylene**
- Anti-spillage rim curved inside prevents water losses
- Installed drainage plug for easier cleaning
- **Integrated galvanized protection bracket**
- Smoothly running tube valve in **¾" brass or ¾" stainless steel** with female **connection from top and bottom**
- Water flow continuously adjustable from outside with regulation screw

RECOMMENDED FOR: Cattle, dairy cows, bulls (without nose ring), horses





DRINKING BOWLS (GENERAL)



Water Tank Drinker

Model 180P

Ref. 00.0180

- Large bowl made of **high-density UV-resistant AQUATHAN plastic** for direct attachment to water tanks, with flange
- Free running valve tongue
- Robust **low pressure** brass valve
- **High water flow** enables quick drinking even at low water pressure
- Flange sealing included

RECOMMENDED FOR: Cattle, horses



Drinking Bowl

Model 18P with 3/4" brass valve

Ref. 100.0183

- Extra large drinking bowl made of premium **UV-resistant polyethylene**
- **Anti-spillage rim** curved inside prevents water losses
- Installed drainage plug for easier cleaning
- **Integrated galvanized protection bracket**
- Smoothly running tube valve in **3/4" brass or 3/4" stainless steel** with female connection from top and bottom
- **Water flow continuously adjustable** from outside with a **regulation screw**

RECOMMENDED FOR: Cattle, dairy cows, bulls (without nose ring), horses



Drinking Bowl

Model 19R with 3/4" brass valve

Ref. 100.0198

- Drinking bowl with double brass tube valve
- Flat and easy-to-clean cast iron bowl in complete enamel finish
- Ideal to be fixed into a separation wall between two boxes
- High water flow up to **20 l/min**
- **Water flow continuously adjustable** from outside with **regulation screws**
- Double brass tube valve with 3/4" female connection from top and bottom
- Calm water flow through tube valves
- 6-hole-fixation

RECOMMENDED FOR: Cattle, dairy cows, bulls (without nose ring)



DRINKING BOWLS (GENERAL)

Drinking Bowl

Model 25R with 3/4" brass valve

Ref. 100.0253

- Large drinking bowl made of **cast iron, completely enamelled**
- Smoothly running tube valve in **3/4" brass or 3/4" stainless steel** with **female connection from top and bottom**
- Calm water flow through tube valve
- **Water flow continuously adjustable** from outside by means of a regulation screw, water flow up to 12 l/min
- With 6-hole-fixation

RECOMMENDED FOR: Cattle, dairy cows, bulls (without nose ring), horses



Drinking Bowl with Float Valve

Model 341 (cast iron, enamelled) for max. 5 bar

Ref. 100.3410

- Large bowl made of **cast iron, black enamelled**
- With float valve up to 8 l/min
- With **push-out-plug Ø30 mm for easy drainage!**
- Removable cover in stainless steel
- No sharp edges, no risk of injury!
- Constant water level – simple adjustment
- 1/2" male connection from right or left hand side

RECOMMENDED FOR: Sheep, goats, dogs, deer, horses, calves, cattle (with antisuction ring), bulls (with nose ring)



Drinking Bowl with Float Valve

Model 350 (cast iron, enamelled inside) 5 bar

Ref. 100.0350

- Large bowl made of **cast iron, white enamelled inside**
- Float valve allowing quick water flow
- Removable cover in stainless steel
- No sharp edges, no risk of injury!
- Constant water level – simple adjustment
- 1/2" male connection, from right hand side

RECOMMENDED FOR: Sheep, goats, dogs





DRINKING BOWLS (GENERAL)



Drinking Bowl with Drink Inducer

Model 370 with 1/2" brass valve

Ref. 100.0370

- Bowl made of **cast iron, completely enamelled**, easy to clean
- Smoothly running stainless steel tube valve even at high water pressure of max. 6 bar
- **With enticement basin** behind the tube valve, which encourages the animals to drink on their own
- Calm water flow through tube valve
- **Water flow continuously adjustable from outside** by means of a regulation screw
- When used in farrowing pens as drinking bowl for the sow and piglets: floor installation next to the feeder. Additional Installation of valve protection (Ref. 102.0262) is highly recommended!

RECOMMENDED FOR: Sheep, goats, calves, dogs



Drinking Bowl with Drink Inducer

Model 375 with 3/4" brass valve

Ref. 100.3753

- Bowl made of **cast iron, completely enamelled**, easy to clean
- **Always fresh and clean water** – no risk of dirty water as in the case of drinking bowls with float valve
- Smoothly running tube valve even at high water pressure of max. 6 bar
- Valve can be operated from all sides
- With **enticement basin** behind the tube valve, which encourages the animals to drink on their own
- Calm water flow through tube valve
- 3/4" female connection from top and bottom: **suited for installation into water circuits!**
- **Water flow continuously adjustable** from outside by means of a regulation screw
- Special back side design enables easy fixation into 90° corners, on the wall or on pipes

RECOMMENDED FOR: Calves, sheep, goats, dogs



DRINKING BOWLS (GENERAL)

Drinking Bowl

Model 1200 with 3/4" brass valve

Ref. 100.1203

Model 1200 with 3/4" stainless steel valve

Ref. 100.1209

- Large deep bowl **in stainless steel**, robust, secure against fracture
- Smoothly running tube valve **in 3/4" brass or 3/4" stainless steel** with **female connection from top and bottom**
- Due to rim bent inwards, water wastage is reduced to a minimum (anti-splash ring)
- Smoothly running tube valve suited
- **Very high water flow** up to **20 l/min** (5,5 gallons/min)

RECOMMENDED FOR: Cattle, dairy cows



Drinking Bowl

Model 1220 with 3/4" stainless steel valve

Ref. 100.1229

- Large deep bowl **in stainless steel**, robust, secure against fracture
- **Very robust:** back wall in stainless steel, welded with the bowl
- Smoothly running tube valve **in stainless steel**
 Mod. 1120: **1/2" male connection from the top**
 Mod. 1220: **3/4" female connection from the top and bottom** (103.3002: circuit connection set: easy installation into water circuits coming **from the bottom**)
- Due to rim bent inwards, water wastage is reduced to a minimum (anti-splash ring)
- **Water flow continuously adjustable** from outside by means of a regulation screw, water flow up to 12 l/min (3,2 gallons/min)

RECOMMENDED FOR: Cattle, dairy cows





DRINKING BOWLS (GENERAL)



Drinking Bowl Model 1230-VA^{3/4}"

integrated steel post, 60 cm

Ref. 100.1238

integrated steel post, 80 cm

Ref. 100.1239

- Robust Steel Post helps to protect drinking bowls against blows and impacts of bulls (or other animals). The force of jumping bulls is transferred to the post, preventing a crash of the drinking bowl.
- Made of thick hot-galvanized steel
- Bowl and valve out of stainless steel, **drinking height 60 cm or 80 cm.**
- Drinking Bowl builds one unit with integrated steel post
- Mounting on a wall or on a post possible
- Special holes are foreseen for installation between the gates, as well as for mounting of the heating element and of the circuit pipe.

RECOMMENDED FOR: Bulls, cattle, dry cows. Without nose ring. Horses.



Drinking Bowl with Float Valve, MINICUP Model 127K (cast iron, plastic-coated)

Ref. 100.1270

- Bowl made of **cast iron, plastic-coated**
- With float valve up to 5 bar
- Removable cover in stainless steel
- Constant water level – simple adjustment
- With **push-out-plug for easy drainage!**
- ½" male connection from right or left hand side

RECOMMENDED FOR: Sheep, goats, calves, dogs, pets



DRINKING BOWLS (GENERAL)

Drinking Bowl IDEAL enamelled

Ref. 100.0061

- Bowl made of **cast iron, completely enamelled in black**
- Smoothly running brass tube valve
- **1/2" female connection** from top and bottom
- Calm water flow through tube valve, no water spillage
- With 4-hole-fixation
- 2 fixing brackets (Order Ref. 131.0169) for fixation on 1 1/2" – 2" pipes necessary

RECOMMENDED FOR: Cattle, horses



Drinking Bowl IDEAL-K plastic-coated

Ref. 100.0066

- Bowl made of **cast iron, completely plastic coated in black**
- Smoothly running brass tube valve
- **1/2" female connection** from top and bottom
- Calm water flow through tube valve, no water spillage
- With 4-hole-fixation
- 2 fixing brackets (Order Ref. 131.0169) for fixation on 1 1/2" – 2" pipes necessary

RECOMMENDED FOR: Cattle, horses





DRINKING BOWLS FOR PIGS



Drinking Bowl

Model 140P with stainless steel valve

Ref. 100.0149

- For piglets from birth up to 15 kg
- Bowl made of robust **AQUATHAN plastic**
- Smoothly running pin valve
- Water flow regulation by enlarging the nozzle boring
- 1/2" male connection from the top

RECOMMENDED FOR: Piglets from birth up to 15 kg



Drinking Bowl

Model 170P with stainless steel valve

Ref. 100.0179

- For piglets up to 25 kg
- Bowl made of robust **AQUATHAN plastic**
- Smoothly running pin valve
- **Water flow continuously adjustable** from outside by means of a regulation screw
- Hooded bowl design avoids fouling
- 1/2" male connection from the top

RECOMMENDED FOR: Piglets



Drinking Bowl

Model 20 with stainless steel valve

Ref. 100.0209

- Bowl made of **cast iron, completely enamelled**
- Smoothly running stainless steel tube valve with 1/2" male connection from the top
- Calm water flow through tube valve
- **Water flow continuously adjustable from outside** with a regulation screw
- When used in farrowing pens as drinking bowl for the sow and piglets: floor installation next to the feeder. Additional installation of **valve protection** (Ref. 102.0255) is highly recommended!

RECOMMENDED FOR: Sow with piglets in farrowing pen, sows, boars



DRINKING BOWLS FOR PIGS

Drinking Bowl Model 70

Ref. 100.0709

- For piglets from birth up to 15 kg
- Completely made of **first-class stainless steel**
- Smoothly running pin valve made of stainless steel with **5 water flow adjustment possibilities**, which enables a quick and exact adjustment of water flow
- ½" female connection from the top

RECOMMENDED FOR: Piglets from birth up to 15 kg



Drinking Bowl Model 72

Ref. 100.0728

- For piglets up to 45 kg
- Made of **first-class stainless steel**
- Deep bowl and offset valve reduce water wastage to a minimum
- Hooded bowl design avoids fouling
- Smoothly running pin valve made of stainless steel with 3 water flow adjustment possibilities, which enables a quick and exact adjustment of water flow
- Mod. 72: ½" female connection from the top

RECOMMENDED FOR: Weaners (piglets up to 45 kg)



Drinking Bowl Model 74

Ref. 100.0748

- For **fattening pigs from 20 kg (45 lbs)**
- Drinking bowl made of **first-class stainless steel**
- Deep bowl and offset pin valve reduce water wastage to a minimum
- **Hooded bowl design avoids fouling**
- Smoothly running pin valve in stainless steel with 3 water flow adjustment possibilities, which enables a quick and exact adjustment of water flow
- Mod. 74: ½" female connection from the top

RECOMMENDED FOR: Fattening pigs





DRINKING BOWLS FOR PIGS



Drinking Bowl Model 76

Ref. 100.0768

- For **sows and boars** (or weaned piglets till fattening)
- Drinking bowl made of first-class stainless steel
- Deep bowl and offset pin valve reduce water wastage to a minimum
- **Hooded bowl design avoids fouling**
- Smoothly running pin valve in stainless steel with 3 water flow adjustment possibilities, which enables a quick and exact adjustment of water flow
- Mod. 76: 1/2" female connection from the top

RECOMMENDED FOR: Sows, boars



Drinking Bowl Model 90 with stainless steel valve

Ref. 100.0909

- For suckling piglets up to 15 kg (33 lbs)
- Bowl made of **cast iron, completely enamelled**
- Smoothly running pin valve
- Water flow regulation by enlarging the nozzle boring
- 1/2" male connection from the top

RECOMMENDED FOR: Piglets from birth up to 15 kg



Drinking Bowl Model 92R with stainless steel valve

Ref. 100.0929

- For piglets up to 35 kg
- Bowl made of **cast iron, completely enamelled**
- Smoothly running pin valve
- **Water flow continuously adjustable** from outside with a regulation screw
- Hooded bowl design avoids fouling
- 1/2" male connection from the top

RECOMMENDED FOR: Piglets



DRINKING BOWLS FOR PIGS

Drinking Bowl

Model 93 with stainless steel valve

Ref. 100.0939

- For weaners from 7 to 45 kg
- Large drinking bowl made of **cast iron, completely enamelled**
- Smoothly running and offset pin valve reduce water wastage to a minimum
- **Water flow continuously adjustable** from outside with of a regulation screw
- Hooded bowl design avoids fouling
- ½" male connection from the top

RECOMMENDED FOR: Weaners (piglets up to 45 kg)

Drinking Bowl

Model 95S with stainless steel valve

Ref. 100.1959

- For fattening pigs from 20 kg (45 lbs)
- Large bowl made of **cast iron, completely enamelled** offers maximum possible stability, **robust quality and hygienic surface!**
- Offset valve and deep bowl reduce water wastage to a minimum
- Animal friendly, hooded bowl design avoids fouling
- Mod. 95S: Water flow continuously adjustable from outside with a regulation screw; ½" male connection from the top

RECOMMENDED FOR: Fattening pigs

Drinking Bowl

Model 96 with stainless steel valve

Ref. 100.0969

- For sows and boars
- Large drinking bowl made of **cast iron, completely enamelled, robust quality and hygienic surface!**
- Solid tube valve in stainless steel
- **Water flow continuously adjustable** from outside by means of a regulation screw
- ½" male connection from the top

RECOMMENDED FOR: Sows, boars





DRINKING BOWLS FOR PIGS



Drinking Bowl with Drink Inducer

Model 370 with stainless steel valve

Ref. 100.0379

- Bowl made of **cast iron, completely enamelled**, easy to clean
- Smoothly running stainless steel tube valve even at high water pressure of max. 6 bar
- **With enticement basin** behind the tube valve, which encourages the animals to drink on their own
- Calm water flow through tube valve
- **Water flow continuously adjustable from outside** by means of a regulation screw
- When used in farrowing pens as drinking bowl for the sow and piglets : floor installation next to the feeder. Additional Installation of valve protection (Ref. 102.0262) is highly recommended!

RECOMMENDED FOR: Sow with piglets in farrowing pen, sows



Drinking Bowl with Drink Inducer

Model 375 with 3/4" stainless steel valve

Ref. 100.3759

- Bowl made of **cast iron, completely enamelled**, easy to clean
- **Always fresh and clean water** – no risk of dirty water as in the case of drinking bowls with float valve
- Smoothly running tube valve even at high water pressure of max. 6 bar
- Valve can be operated from all sides
- With **enticement basin** behind the tube valve, which encourages the animals to drink on their own
- Calm water flow through tube valve
- 3/4" female connection from top and bottom: **suited for installation into water circuits!**
- Water flow continuously adjustable from outside by means of a **regulation screw**
- Special back side design enables easy fixation into 90° corners, on the wall or on pipes

RECOMMENDED FOR: Sow with piglets in farrowing pen, sows



NIPPLE DRINKERS FOR PIGS

Nipple Drinker for Fattening Pigs Model 293

Ref. 180.0293

- Mouthpiece (Ø 21 mm)
- Completely made of **first-class stainless steel**
- With red regulation cap for 5 water flow adjustment possibilities
- ½" male connection



Nipple Drinker for Piglets Model 331

Ref. 180.0331

- Mouthpiece made of stainless steel (Ø 17 mm)
- ½" male connection
- Completely made of **first-class stainless steel**
- Water flow regulation by enlarging the nozzle boring



Nipple Drinker for Fattening Pigs Model 332

Ref. 180.0332

- Mouthpiece made of stainless steel (Ø 21 mm)
- ½" male connection
- Completely made of **first-class stainless steel**
- Water flow regulation by enlarging the nozzle boring



Nipple Drinker for Sows and Boars Model 333

Ref. 180.0333

- Mouthpiece made of stainless steel (Ø 27 mm)
- Water flow regulation by enlarging the nozzle boring
- Completely made of **first-class stainless steel**
- **Water flow continuously adjustable** from outside by means of a regulation screw
- ½" male connection
- Water volume regulation by enlarging the bore of the nozzle installed in the valve





NIPPLE DRINKERS FOR PIGS



Nipple Drinker for Fattening Pigs

Model 324

Ref. 180.0324

- Mouthpiece made of stainless steel (Ø 22 mm)
- **Water flow continuously adjustable** from outside by means of a regulation screw
- ½" male connection



Nipple Drinker for Sows and Boars

Model 329

Ref. 180.0329

- Mouthpiece made of stainless steel (Ø 27 mm)
- **Water flow continuously adjustable** from outside by means of a regulation screw
- ½" male connection



Nipple Drinker for Sows and Boars

Model 326

Ref. 180.0330-1

- Robust mouthpiece made of stainless steel
- Easy adjustment of water quantity to the existing water pressure by exchanging the enclosed nozzles
- ½" male connection
180.0326-1 Connection in brass
180.0330-1 Connection in stainless steel



Pin Valve for Pigs

Model 559 in stainless steel

Ref. 180.0559-2

- For installation above the feeding trough or into automatic feeders
- ½" female connection, inclusive sealing
- Water flow regulation by enlarging the nozzle boring



NIPPLE DRINKERS FOR PIGS

Wall Angle

Model 325 Inclination 15°

Model 1964 Inclination 30°

- Made of stainless steel, with two fixation lugs
- 1/2" female connection thread from the top
- 1/2" female exit, inclination 15° or 30°

Ref. 101.0325

Ref. 101.1964



Wall Angle

Model 328

- Made of first-class **cast iron**, painted, with two fixation lugs
- 1/2" female connection thread
- Connection from top and bottom, **suited for water circuits**
- 1/2" female exit, inclination 10°

Ref. 101.0328



Quick Height Adjusting Device without Use of Tools

Model 349

- 1/2" female exit for nipple drinker
- 1/2" connection
- Stainless steel pipe
- Regulation range 400 mm

Ref. 101.0349





PROTECTION BRACKETS & STEEL POSTS



SUEVIA Steel Post

- Robust Steel Post helps to protect drinking bowls against blows and impacts of bulls (or other animals). The force of jumping bulls (or cows) is transferred to the post, preventing damage to the drinking bowl.
- Made of thick hot-galvanized steel
- Suitable for drinking bowl Mod. 25R or Mod. 19R, drinking height 40, 60 or 80 cm
- Inclusive fastening material for the drinking bowl
- Mounting on a wall or on a post possible
- Special holes are foreseen for installation between the gates, as well as for mounting of the heating element and of the circuit pipe.

Ref.	Type
------	------

for Mod. 25R:

101.0462	Steel Post for Mod. 25R, 40 cm
-----------------	--------------------------------

101.0455	Steel Post for Mod. 25R, 60 cm
-----------------	--------------------------------

101.0456	Steel Post for Mod. 25R, 80 cm
-----------------	--------------------------------

for Mod. 19R:

101.0459	Steel Post for Mod. 19R, 60 cm
-----------------	--------------------------------

101.0460	Steel Post for Mod. 19R, 80 cm
-----------------	--------------------------------





PROTECTION BRACKETS & STEEL POSTS

Protections for Drinking Bowls

- To protect the drinking bowl against blows and impacts from the animals, galvanized

Ref.	Suited for
101.0469	Model 10P, 20, 12P, 25R, 46, 115, 1100 and 1200 only for wall fixation. For horses.
101.0470	Model 130P, 340, RUB for wall and pipe fixation (1 ½" - 2")
101.0472	Model 12P and 25R for wall and pipe fixation 60 - 102 mm (2" - 3 ½")
101.0473	Model 115 and 1200 for wall and pipe fixation 2" - 3 ½" (60 - 102 mm)
101.0474	Mod. 19R for wall and pipe fixation 2" - 3 ½" (60 - 102 mm) (circuit connection: 103.1987 fits. 103.3003 does not fit!)
101.0475	Mod. 1220 for wall and pipe fixation 2" - 3 ½" (60 - 102 mm)
101.0476	Mod 135P for 60 - 102 mm (2" - 3 ½")

Ref.	Type
102.0249	Valve protection, for Mod. 25R, 12P, 18P, 46, 375, 1200, 1200P
102.0255	Valve protection, for Mod. 20
102.0262	Valve protection, for Mod. 370

Ref.	Type
131.1301	Protection bracket, galvanized, with fixing parts
181.0327	Protection bracket, galvanized, incl. wall angle
101.0179	Double bracket 1 ¼" - 2"

Ref.	Type
131.1390	Protection bar, hot-galvanized, for Compact Trough Drinker 130.6140
131.1391	Protection bar, hot-galvanized, for Mod. 480, 500, 600
131.1393	Protection bar, hot-galvanized, for Mod. 490, 520, 620
131.1394	Protection bar, hot-galvanized, for Mod. 480, 500, 600 if installed with fixation 90°
131.1396	Protection bar, hot-galvanized, for Compact Trough Drinker 130.6150





PROTECTION BRACKETS & STEEL POSTS



Adapter Plate

Ref.	Type
101.1240	Adapter plate for 48 – 102 mm (1 ½" – 3 ½"), U-bolts needed



Mounting Brackets, galvanized

- For fixation of SUEVIA Drinking Bowls on posts or on tubes (for fixation of Models 10P, 12P, 16P, 18P, 19R, 20, 25R, 46, 115, 130, 340, 350, 1200)

Ref.	Type
101.1486	Mounting Bracket for posts Ø 76 mm (2 ½")
101.1487	Mounting Bracket for posts Ø 102 mm (3 ½")
101.1488	Mounting Bracket for posts Ø 140 mm (5")



Corner Plate

- For fixation of SUEVIA Drinking Bowls on a corner (for fixation of Models 12P, 25R, 370, 375)

Ref.	Type
101.1490	Corner plate



Ref.	Type
102.1713	Mounting support for Mod. 375-H
131.1050	Fixation 90°, hot-galvanized, for Mod. 480, 500, 600
131.6093	2 fixation plates for 4 or 5 bar barriers
131.1340	Fixing brackets for WT80, galvanized, 2 pieces, incl. screws
131.1341	Holder for 130.6137 for 102 mm tube, with screws
131.1342	Holder for 130.6137 for 140 mm tube, with screws
131.1343	Holder for 130.6137 for H-steel beams, with screws
101.0179	Double bracket 42 – 60 mm (1 ¼" – 2")
101.0180	Fixing bracket 60 – 89 mm (2" – 3")





CALF HUTCHES

Calf Hut MAXI

Ref. 130.1602

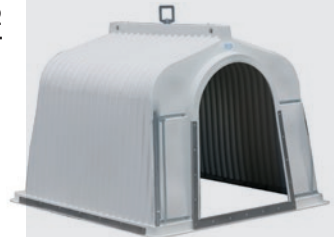
- For calves up to 8 weeks of age
- Made of **premium quality polyethylene**, rotomoulded, thus being insusceptible to shocks, weatherproof and of course **UV-resistant**
- **Always fresh air for your calf.** Adjustable three-holeventilation in the rear wall
- Calf Hut MAXI is equipped **with two lugs** for ease of transportation.
- For cleaning purposes the calf hut can be put on end. The hut can be cleaned with usual cleaning material



Calf Hut for 5 Calves

Ref. 130.1742

- Calf hut for a group of 5 calves made of **premium quality polyethylene**, weatherproof and of course **UV-resistant**
- Calves rest in a dry and protected place, protected by wind and weather.
- In case of very high temperatures the calves are protected inside from direct sunlight and find a very comfortable interior resting area both in summer and winter time.
- Thanks to the position of the ventilation system, the air exchange can be adjusted to every weather condition.
- The smooth surface is easy to clean!
- Rotomoulded, thus being insusceptible to shocks, it does not break easily in comparison with calf huts made of GFK
- A stainless steel threshold and sideways reinforcement L-profiles reinforce the calf hut: built to last for years!
- Large rotating loop can be easily reached from all sides for calf hut transportation.





CALF HUTCHES



131.1015



131.1016



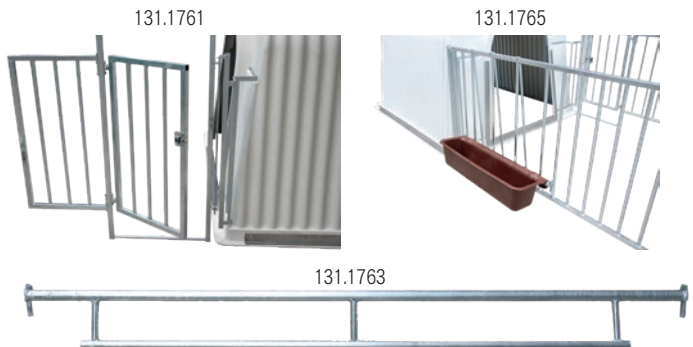
131.1418



131.1420

Accessories for Calf Huts MINI, MIDI and MAXI

Ref.	Type
131.1015	Holder for flattened calf bucket drinker, galvanized
131.1016	Bracket, galvanized, for 12 l bucket or feeding bowl 5 l
131.1417	Front door for MINI / MIDI / MAXI, hot-galvanized, with two openings for 2 buckets
131.1418	Container for hay and concentrates for outdoor feeding (for cages 131.1434, 131.1633). In high-quality polyethylene, with galvanized cover easy to tilt. The upper part is used as a hay rack (bars in stainless steel), the lower part is used for familiarization of calves to concentrates.
131.1420	Container for concentrates, for Standardcage
131.1634	Cage for calf hut MAXI, hot-galvanized, incl. front side with two openings for 2 buckets, with wheels
131.1761	Cage for calf hut for 5 calves: front feeding gate with single and group headlock device; one side with 3 openings for optional holder for 1 m feeding trough; one side with door
131.1762	Holder for 5 bucket drinkers (can be tilted upwards and locked)
131.1763	Holder for one feeding trough 2 m (or 2 feeding troughs 1 m)
131.1764	Feeding trough 2 m (suitable for holder 131.1763)
131.1765	Feeding trough 1 m (1 or 2 pcs suitable for holder 131.1763, or 1 pc for holder 131.1766)
131.1766	Holder for one feeding trough 1 m
131.1767	Holder for 5 pcs 15 l buckets





COW BRUSHES

Scratch Brush 50x15cm

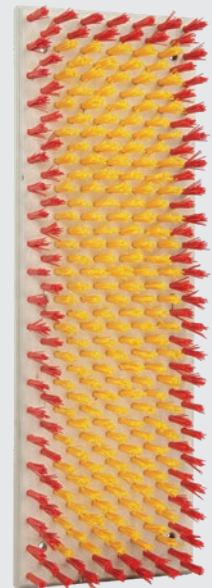
Ref. 130.5019

- Vertical mounting on a wall
- Stable plate of recycled plastic with high quality and robust nylon bristles
- Suitable for calves

Scratch Brush 90x30cm

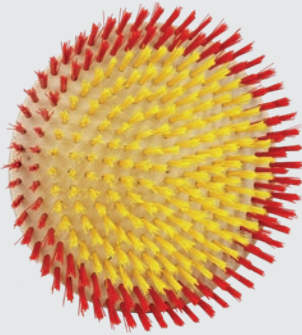
Ref. 130.5009

- Animals can rub themselves easily
- Quick and easy to mount
- Vertical mounting on a wall through 6 holes Ø13 mm.
- Stable wooden plate with high quality and robust nylon bristles
- Suitable for indoor use.





COW BRUSHES



Scratch Brush round Ø60 cm

Ref. 130.5018

- Animals can rub themselves easily. The brush has been rated as outstanding by testing institutes.
- Quick and easy to mount.
- Vertical mounting on a wall. Without holes. Depending on the installation situation, you can drill the holes suitable.
- Stable wooden plate with high quality and robust nylon bristles.
- Suitable for indoor use.



Cow Brush EASYCLEANER DUO IV 230 V, 50/60 Hz

Ref. 130.5017

- Anatomically formed brush, bristles made of a very solid and special plastic
- For **up to 100 cows**. In order that every cow has enough time for brushing and wellness, the ideal cow quantity is 60 cows.
- Actuation via maintenance-free and **heavy-duty gear with gear wheels made of hardened steel**.
- Splash-water-protected and dust-proof motor.
- Suitable for animals of different size due to pendulum mounting height range ~28 cm
- Easy start of actuation by touching the brush
- Change of direction of rotation of bristles each time when the brush is operated, ensuring an even use of bristles. Operating time approx. 2 min.
- **Resistance reverse mechanism:** In case of an overload situation e.g. wound up tail, the EASYCLEANER DUO stops automatically and changes direction of rotation
- Brush ready-for-connection, for indoor and outdoor use (outdoor under a small shelter to prevent dirt particles and hair from sticking to the brushes in wet conditions.)





SUEVIA

COW BRUSHES

Cow Brush **EASYCLEANER UNO**

Ref. 130.5011

- Brush disc is placed in an inclined position. The extensive brushing surface and the rotating brushing movement provide a steady massage of the head and back section as well as big parts of the flanks and offer the cows a maximum cow comfort
- Suitable for animals of different size due to inclined mounting, no height adjustment necessary
- Bristles made of a very solid and special plastic
- Solid, space-saving construction
- Actuation via maintenance-free and heavy-duty gear with gear wheels made of hardened steel
- Easy start of actuation by touching the brush
- Change of direction of rotation of bristles each time when the brush is operated, ensuring an even use of bristles. Operating time approx. 2 min.
- **Resistance reverse mechanism adjustable.** In case of an overload situation e.g. wound up tail, the EASYCLEANER stops automatically and changes direction of rotation
- For indoor use. Easy installation on a wall or on a post
- **EASYCLEANER UNO for 60 cows**





COW BRUSHES



Brush TWISTER

Ref. 131.4154

- Free vertically swinging brush, without electrical gear.
- Offers animals a possibility to rub and to scrub themselves
- Ideal for use as an activity or an anti-stress toy
- Due to pendular hanging suited for animals of different size, no height adjustment necessary
- Anatomically formed brush, 75 cm long
- Resistant bristles made of premium-quality plastic
- Easy mounting
- According to building height, it is possible to fix the brush to the ceiling or to the rafter, connecting it with the plastic-coated mounting bar (75 cm long, Ref. 131.4151). For higher buildings it is possible to mount additional mounting bars. As alternative a solid hot galvanized suspension arm (overhang 1,20 m, Ref. 131.4152) is available for fixation on a wall or a post. Suspension arm and mounting bar must be ordered separately.
- For the installation inside or outside the stable
- Suited for cattle, calves, goats and horses



Mounting bar with welded shackles

Ref. 130.4151

Suspension arm, hot galvanized

Ref. 130.4152



VINK Cattle brush complete with spring

Ref. 300.0458

- Very robust version
- Strong spring suspension
- Special long-lasting nylon bristles
- Horizontal bristles movable into all directions thanks to spring suspension
- Matches all different cattle sizes



TROUGHS & DRINKERS

Valve Trough Drinker Model 500

Ref. 130.0500

- Trough with **one** drinking place suited for **15 - 20 animals**
- **3/4" male connection from right or left side** is possible by changing the valve from right to left or vice versa
- Subsequent installation of one **heating element** (Ref. 131.0523) and of a **valve heating** (24 V, 7 W, 131.0527) possible



Double Valve Trough Drinker Model 520

Ref. 130.0520

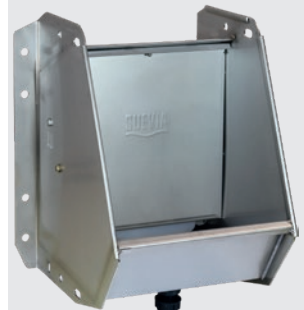
- Trough drinker with **two facing drinking places** for **30 - 40 animals**
- No fights for an individual place as alongside longer troughs, enabling **two animals to drink simultaneously**
- **3/4" lateral male connection**
- Supports for lateral wall mounting inclusive
- Subsequent installation of **1 or 2 heating elements** (Ref. 131.0524) and of a **valve heating** (24 V, 7 W, 131.0527) possible



Trough Drinker with Float Valve Model 600

Ref. 130.0600

- With one drinking place for **15 - 20 animals**
- **3/4" male connection from right or left side** is possible by changing the valve from right to left or vice versa
- Integrated large drainage hole
- Installation of one **heating element** (Ref. 131.0524) and of a **valve heating** (24 V, 7 W, 131.0527) possible



Transformers, Heating Units, Frost Protection Heating Cables
& Further Accessories available on request



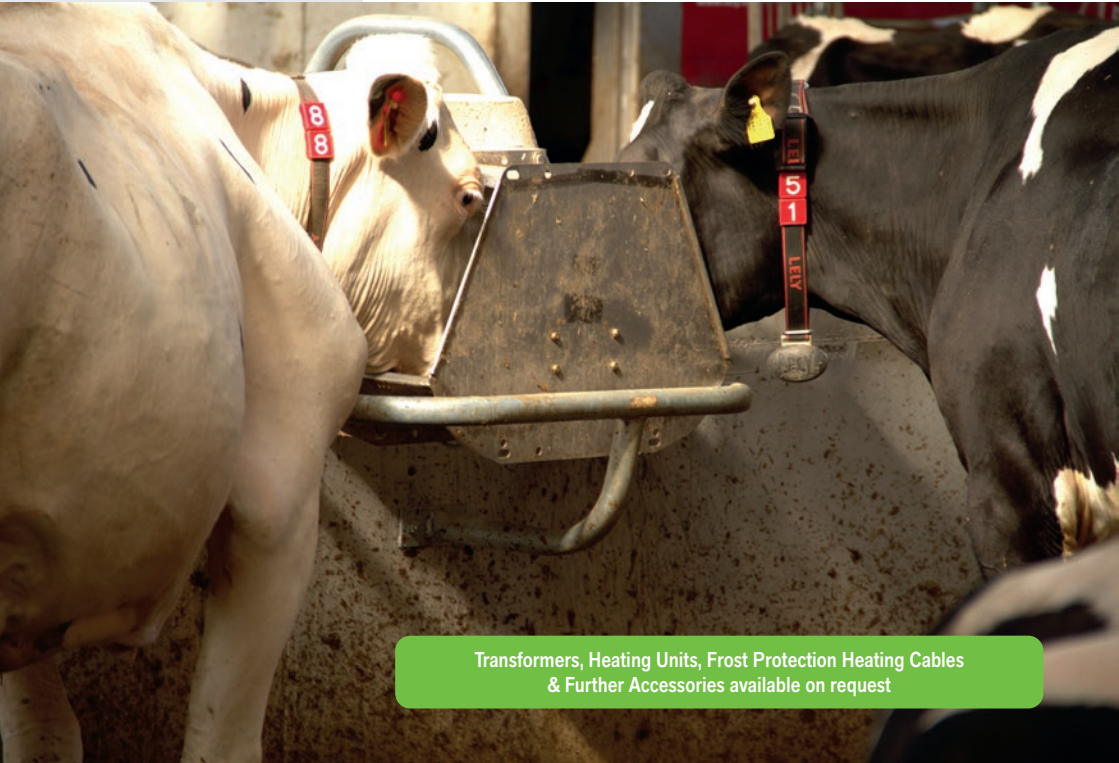
TROUGHS & DRINKERS



Double Trough Drinker with Float Valve Model 620

Ref. 130.0620

- Trough with two facing drinking places **for 30 - 40 animals**
- No fights for an individual place as given on longer troughs, enabling **two animals to drink simultaneously** on their own chosen place
- $\frac{3}{4}$ " lateral male connection, possible from left or right
- With two large drainage holes
- Supports for lateral wall mounting inclusive
- Installation of **two heating elements** (Ref. 131.0524) and of a **valve heating** (24 V, 7 W, 131.0527) recommended!



Transformers, Heating Units, Frost Protection Heating Cables
& Further Accessories available on request



TROUGHS & DRINKERS

SUEVIA Volume Trough

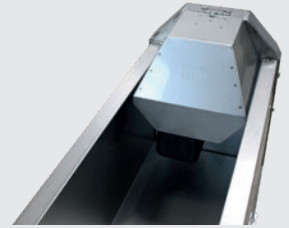
for warmed-up water from milk cooling system

Ref. 130.6121 **2,0 m, 240 l, for wall and ground fixation**

Ref. 130.6131 **3,0 m, 360 l, for wall and ground fixation**

Ref. 130.6181 **3,15 m, 610 l, for ground fixation**

- **Voluminous trough in stainless steel**
- **Ideal to water the animals with warmed-up water from milk cooling system**
- Anti-spillage rim reduces water wastage to a minimum
- Free water flow into trough by 3/4" without float valve: surplus water is drained through boring in drainage plug.
- **Modular concept** offers the possibility to link two troughs with a **connection set** (131.0286), which results in a **storage volume of up to max. 1220 l**.
- When using a storage tank and when controlled water flow into the trough is desired, a **low pressure float valve** (131.0738) can be used.
- For direct connection to a water supply line you can install apart from the low pressure valve additionally a **MASTERFLOW Float Valve** (131.0723).
- **Plug holder DE LUXE** in scope of delivery. For an easy opening and closing of the drainage plug. Drainage plug can be operated above water surface!
- **Big hole enables quick drainage.** With holder for drainage tube.
- With overflow hole in plug: water of frost protection guard can flush through this hole.



ACCESSORIES:

Ref.	Type
131.6031	1 set of legs (= 4 pieces)
131.0775	Float valve cover for volume trough



TROUGHS & DRINKERS



Compact Trough Drinker 55 cm

Ref. 130.6141

Compact Trough Drinker 100 cm

Ref. 130.6149

- Compact trough drinker for wall fixation, sufficient for **15 - 20 animals**
- Completely made of **stainless steel**
- Water flow of up to **40 l/min** permits a continual and efficient watering of the animals
- $\frac{3}{4}$ " male connection, possible from right or left hand side
- With **Ø100 mm drainage** for quick evacuation
- Contents 30 l (55 cm), 60 l (100 cm)

Compact Trough Drinker 200

Ref. 130.6152

- Compact trough drinker for wall fixation, sufficient for **30 - 40 animals**
- Completely made of **stainless steel**
- Water flow of up to **40 l/min** permits a continual and efficient watering of the animals
- $\frac{3}{4}$ " male connection, possible from right hand side
- With drainage for quick evacuation (Ø 100 mm), with a plug security against pulling out by the animals.
- The drain is positioned slightly off-center so that the trough drinker can be mounted central in a partition.
- Contents 120 l





TROUGHS & DRINKERS

Trough in Stainless Steel for sheep and goats

- Trough for wall fixation
- Completely made of **stainless steel**
- For 50 – 80 sheep / goats
- **With float valve - constant water level**
- According to water pressure, water flow up to 5 l/min
- ½" lateral male connection, possible from left or right
- Integrated drainage hole for quick evacuation
- Contents 7/13 l (2/3,5 gallons)

Ref.	Type
130.6153	Trough in stainless steel 1,2 m, for sheep and goats
130.6155	Trough in stainless steel 2,1 m, for sheep and goats



SUEVIA Thermo Trough Drinker 2,3 m Model 6523

Ref. 130.6523

- **Fully insulated double-walled trough drinker made of UV-resistant polyethylene, for ground fixation**
- Length 2,3 m, contents approx. 160 l
- Excellent insulation gives frost protection in winter, fresh water in summer and best-in-class stability
- The trough itself is conical and inclined, with a **large drainage hole**, ensuring quick discharge
- Equipped as standard with SUEVIA MAXIFLOW float valve, providing a generous water flow of up to **40 l/min**
- **Allows installation of max. three high or low pressure float valves** enabling e.g. the use of warmed-up water from the milk cooling system (in case of 131.0738)
- For adjustment or cleaning purposes of the float valves the insulated cover can easily be removed without tools
- With holder for a drainage tube (tube DN 125 has to be provided by customer)
- To prevent that the animals are jumping into the trough, an anti-jump protection bar (provided on site) must be installed above the trough!
- Thermo Trough Drinker Model 6523 is **frost-protected down to -10°C due to insulation and without additional heating!**





TROUGHS & DRINKERS



Without any additional heating element, the float valve in the completely insulated cage assures a water flow down to -10° C. With an additional heating element installed, this area stays frost-free even down to -30° C.



SUEVIA Thermo Trough Drinker 2,7 m Model 6527

Ref. 130.6527

- **Double-walled fully insulated trough drinker made of UV-resistant polyethylene, for ground fixation**
- Length 2,7 m, contents approx. 285 l
- Equipped as standard with SUEVIA MAXIFLOW float valve, providing a generous water flow of up to 40 l/min.
- Excellent insulation gives frost protection in winter, fresh water in summer and best-in-class stability.
- Trough drinker has an inclined and conical bottom and can be quickly drained through 2 large drainage holes (Ø 100 mm).
- For water level adjustment or for cleaning purposes the insulated float valve cover can easily be removed without tools
- A lateral large service aperture enables an easy connection of water and power supply

SUEVIA Thermo Trough Drinker 2,3 m Model 6542

Ref. 130.6542

- **Double-walled fully insulated trough drinker made of UV-resistant polyethylene, for ground fixation**
- Length 4,3 m, contents approx. 320 l
- Two-parts drinker existing of a „Master-Trough“ with float valve cover and an "Extension-Trough", which are connected on the spot with each other via a connection set in the float valve area.
- Thanks to a compact modular execution, ideal dimensions for transportation
- Equipped as standard with SUEVIA Maxiflow float valve, providing a generous water flow of up to **40 l/min**. If a higher water flow is desired, a second float valve can be installed additionally.
- Excellent insulation gives frost protection in winter, fresh water in summer and best-in-class stability
- Both trough parts have an inclined and conical bottom and can be quickly drained for cleaning purposes through large drainage holes
- For water level adjustment or for cleaning purposes the insulated float valve cover can easily be removed without tools
- A lateral large service aperture, which can also be opened without tools, enables an easy connection of water and power supply



TROUGHS & DRINKERS

SUEVIA Thermo Trough Drinker 4,3 m Model 6543

Ref. 130.6543

- **Double-walled fully insulated trough drinker made of UV-resistant polyethylene, for ground fixation**
- Length 4,3 m, contents approx. 320 l
- Two-parts drinker existing of a „Master-Trough“ with float valve cover and an “Extension-Trough”, which are connected on the spot with each other via a connection set in the float valve area.
- Thanks to a compact modular execution, ideal dimensions for transportation
- Equipped as standard with SUEVIA MAXIFLOW float valve, providing a generous water flow of up to **40 l/min**. If a higher water flow is desired, a second float valve can be installed additionally.
- Excellent insulation gives frost protection in winter, fresh water in summer and best-in-class stability
- Without any additional heating element, the float valve in the completely insulated cage assures a water flow down to -10°C . With an additional heating element installed, this area stays frost-free even down to -30°C .
- Both trough parts have an inclined and conical bottom and can be quickly drained for cleaning purposes through large drainage holes
- For water level adjustment or for cleaning purposes the insulated float valve cover can easily be removed without tools
- A lateral large service aperture, which can also be opened without tools, enables an easy connection of water and power supply



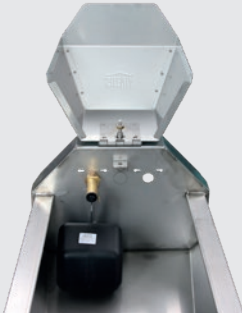
Transformers, Heating Units, Frost Protection Heating
Cables & Further Accessories available on request



TROUGHS & DRINKERS

SUEVIA Quick Drainage Trough

- **Conical inclined trough in stainless steel** for wall mounting
- Anti-spillage rim – water wastage reduced to a minimum
- **Float valve cover can be pivoted upwards without use of tools!**
- Installed float valve **MASTERFLOW**, water flow up to 40 l/min (11 gallons/min), 3/4" male connection.
- Plug inclusive **plug holder DE LUXE!** Drainage plug can be operated above water surface!
- **Large hole for quick drainage;** with holder for drainage tube
- With overflow hole in plug: surplus water of frost protection guard can be flushed through this hole.



130.6319



Ref.	Type
130.6714	Quick drainage trough 1,4 m
130.6719	Quick drainage trough 1,9 m
130.6723	Quick drainage trough 2,3 m
130.6728	Quick drainage trough 2,85 m
130.6742	Quick drainage trough 4,2 m
131.6031	1 set of legs (= 4 pieces)
130.6319	Trough Drinker Inox 1,9 m



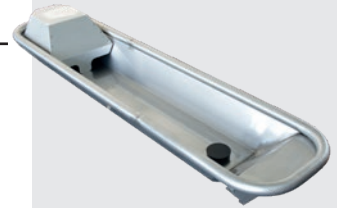


TROUGHS & DRINKERS

SUEVIA Rounded Rim Trough

1,5 m, 2,0 m, 3,0 m for wall, ground and post fixation

- **Conical inclined trough in stainless steel** for wall mounting
- **Trough with stainless steel pipe rim**
- The stainless steel pipe encloses completely the trough
- The float valve cover is inclined towards all sides avoiding any risk of injury
- Anti-spillage rim – water wastage reduced to a minimum
- Installed float valve **MASTERFLOW**, water flow up to 40 l/min (11 gallons/min), 3/4" male connection at the front side
- **Float valve cover can be pivoted upwards without use of tools**
- **Large hole** for quick drainage
- With holder for drainage tube (tube DN 125 to be provided on site)
- With hole at the side of the trough: If frost protection guard is installed (see beneath), excessive water produced by frost protection guard is channelled through hole
- Rounded rim trough will be delivered without consoles, **suitable consoles (for wall, ground or post fixation) have to be chosen as accessory.**



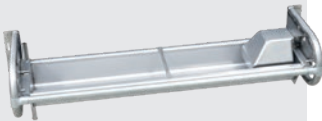
Ref.	Type
130.7015	Rounded rim trough 1,5 m, without fixation
130.7020	Rounded rim trough 2,0 m, without fixation
130.7030	Rounded rim trough 3,0 m, without fixation
130.7060	Set Consoles for wall fixation, stainless steel (no steel bars necessary)
130.7052	Set Consoles for fixation between posts up to 3½"
130.7061	Set Consoles for ground fixation, stainless steel, for 1,5 m (incl. steel bars)
130.7062	Set Consoles for ground fixation, stainless steel, for 2,0 m (incl. steel bars)
130.7063	Set Consoles for ground fixation, stainless steel, for 3,0 m (incl. steel bars)





TROUGHS & DRINKERS

With wall fixation, stainless steel



- Due to the almost even bottom of the trough with the consoles, it is possible to drive under the trough with a manure robot.
- These consoles will be mounted to cubicals or on a wall. A cross bar is not necessary.
- Protection bar, pipe clamps, lever and screws are in galvanized steel.

Ref.	Type
130.8561	Flat tip-over trough 1,0 m, with stainless steel wall fixation
130.8562	Flat tip-over trough 1,5 m, with stainless steel wall fixation
130.8563	Flat tip-over trough 2,0 m, with stainless steel wall fixation
130.8564	Flat tip-over trough 2,5 m, with stainless steel wall fixation
130.8565	Flat tip-over trough 3,0 m, with stainless steel wall fixation



With ground fixation, stainless steel



- Consoles made of stainless steel. Top edge of bowl ~87cm. (same height as standard in galvanized).
- Cross bar, protection bar, pipe clamps, lever and screws are in galvanized steel.

Ref.	Type
130.8571	Flat tip-over trough 1,0 m, with stainless steel ground fixation
130.8572	Flat tip-over trough 1,5 m, with stainless steel ground fixation
130.8573	Flat tip-over trough 2,0 m, with stainless steel ground fixation
130.8574	Flat tip-over trough 2,5 m, with stainless steel ground fixation
130.8575	Flat tip-over trough 3,0 m, with stainless steel ground fixation



TROUGHS & DRINKERS

Diaphragm pasture pumps with bowl in polyethylene

Model 547-STANDARD (PE bowl)

Ref. 100.0547

Model 548-JUNIOR (PE bowl)

Ref. 100.0548

- **Smoothly running diaphragm pasture pump**, operation can quickly be learned by the animals
- The animals pump their own water from an existing well or surface water and are this way always provided with fresh water
- **One pump for all:** for sensitive animals e.g. horses or young animals, the pump lever can be changed to another position. Then the force to push will be lower, with a bit less pumping volume.
- Operating lever made of first-class cast iron, plastic-coated
- High-performance diaphragm for **suction down to 7 m**
- ~0,4 l per movement (in relation to suction depth)
- Sufficient for 15 – 20 animals
- Mod. 547, Mod. 458: bowl made of **solid UV-resistant polyethylene**
- Mod. 548 JUNIOR: with additional lateral drinking bowl for young stock, which are not able yet to activate the pasture pump. Young animals are provided with fresh water, which runs automatically from the main bowl into the lateral bowl, produced by the pumping action of the mother.
- Mod. 556: bowl made of first-class cast iron, plastic coated. Total weight 32 kg! Very heavy construction.



100.0547



100.0548



ACCESSORIES:

Ref.	Type
101.0558	Suction tube set plastic, 7 m



TROUGHS & DRINKERS

160.0103



160.0101



160.0105



Pasture Troughs

200 - 1500 litre

- Big volume pasture troughs for water supply of groups of animals on pasture
- Made of **high-quality UV-resistant polyethylene**
- Internally rolled rim, no water spillage
- Large drain hole ensures quick and easy drainage, as well as cleaning
- WT 200 and WT 400: with lateral fixing loops for better mounting on pasture
- WT 400 - WT 1500: Oval form enables more animals to drink simultaneously and even being loaded on transporters
- For automatic filling: subsequent installation of **membrane float valve** (Ref. 131.0800) or **low pressure float valve** (Ref. 131.0675)! In case of WT1500 also MAXIFLOW float valve (Ref. 131.0700) or **low pressure float valve Model 738** (Ref. 131.0738) possible.

Available Sizes:

Ref.	Type	Dimensions approx. (l x w x h)
160.0103	Pasture trough WT200	153 x 54 x 46 cm
160.0104	Pasture trough WT400	125 x 82 x 63 cm
160.0100	Pasture trough WT600	140 x 100 x 63 cm
160.0101	Pasture trough WT1000	180 x 120 x 63 cm
160.0105	Pasture trough WT1500	220 x 160 x 65 cm





TROUGHS & DRINKERS

Trough for Free Stalls and Pasture Model WT30

Ref. 160.0030

- **Double-walled fully insulated trough drinker made of UV-resistant polyethylene, for ground fixation**
- **Trough with float valve** made of premium **UV-resistant polyethylene** for wall fixation, contents 30 l (8 gallons)
- Integrated MAXIFLOW float valve providing a water flow of up to 40 l/min (11 gallons/min)
- 3/4" female connection from the right. Connection from the left can be drilled on site.
- Easy access to float valve by service aperture
- With big hole for quick drainage
- **Also with low pressure float valve** available: then suited for water pressure **max. 1 bar** (Ref. 160.0031)



Trough for Free Stalls and Pasture Model WT80

Ref. 160.0102

- **Drinker with float valve** made of top quality **UV-resistant polyethylene**
- With two drinking places, volume 80 l (21 gallons)
- Four holes foreseen for fixation on the ground or a socle
- **Installed high-performance float valve**, 1/2" female connection possible at the rear side of the trough from top or bottom
- High water flow up to 35 l/min (9 gallons/min)
- Easy access to float valve thanks to big service aperture
- No water spillage thanks to internally rolled rim
- Big hole for easy and quick drainage
- **Also with low pressure float valve** (3/4" male connection) available: then suited for water pressure **max. 1 bar** (Ref. 160.0106)





FEEDER & CLEANING BATHS



Cleaning Bath for Cattle

KB200, 2,0 m

Ref. 160.0160

KB280, 2,8 m

Ref. 160.0161

- Made of high-density **UV-resistant polyethylene**
- The **honeycomb design** guarantees that the cows' hooves are spread when passing through thus enabling easy entry of disinfectant, secure stance of animals
- Dimensions approx. 200 x 90 x 15 cm (KB200) or 280 x 90 x 15 cm (KB280)
- Capacity 200 l (KB200) or 280 l (KB280)

RECOMMENDED FOR: Cattle, dairy cows, sheep



Triangular Feeder Model 210

Ref. 160.0210

Rectangular Feeder Model 211

Ref. 160.0211

- Trough made of premium quality **UV-resistant polyethylene**
- Smoothly moulded edges – no risk of injury for the animal!
- Anti-waste rim prevents spillage
- Equipped with drainage plug for better cleaning
- Model 210 triangular feeder (Ref. 160.0210) contents 22 l
- Model 211 rectangular feeder (Ref.160.0211) contents 26 l

RECOMMENDED FOR: Calves, horses



Semicircle Feeder Model 212

Ref. 160.0212

- Ideal for mounting in horse boxes, e.g. on turnable feed doors!
- Dimensions approx. 62 x 19 x 31 cm
- Capacity 19 l



BUCKET & CALF ACCESSORIES

Buckets and Calf Accessories

Ref.	Type
300.0012	Bucket in plastic, 12 l
300.0013	Calf bucket drinker, with teat, flat side, 8 l
300.0045	Bucket 15 l, green
300.0049	Lid for calf bucket drinker, flat side, 8 l
300.0288	Feeding bowl, 5 l
300.0632	Calf Coat Standard, grey, back length 67 cm. Improves calf's immune system and supports his well-being in his first days and weeks after birth.
300.0444	Feed bucket 23 l, conical form
300.0046	Bucket, 20 l with scale



300.0012



300.0013



300.0049



300.0288



300.0632





FLOAT VALVES



Float Valve MAXIFLOW for 1-5 bar

Ref. 131.0700

- For installation into troughs and tanks
- 3/4" male connection
- With stainless steel nozzle!
- 131.0700: High-performance float valve, for max. 5 bar, water flow up to 40 l/min (11 gallons/min)
- 131.0738: for water pressure up to max. 1 bar



Float Valve MASTERFLOW for 1-5 bar

Ref. 131.0723

- For installation into troughs and tanks
- 3/4" male connection
- With stainless steel nozzle!
- 131.0723: High-capacity float valve **Model 723**, for water pressure up to max. 5 bar, water flow up to 40 l/min (11 gallons/min)
- 131.0739: Low pressure valve **Model 739** up to max. 1 bar



Membrane Float Valve EASYFLOW for 1-5 bar

Ref. 131.0800

- For installation into troughs and tanks
- Water flow up to 35 l/min (9 gallons/min)
- 1/2" male connection
- For water pressure up to max. 5 bar
- Suited for all SUEVIA pasture troughs WT200 – WT1500



STAINLESS STEEL CONNECTION PIPES

Stainless Steel Connection Pipes one exit

- With one exit 1/2" female thread, inclination 30°
- 1/2" male connection
- With fixing clips
- **Movable upper clip** ensures safe fixation on all different types of separating walls!

Ref.	Type
103.1905	Connection pipe stainless steel 1/2", 1 x f exit 30°, m connection, 38 cm
103.1906	Connection pipe stainless steel 1/2", 1 x f exit 30°, m connection, 50 cm
103.1907	Connection pipe stainless steel 1/2", 1 x f exit 30°, m connection, 75 cm
103.1908	Connection pipe stainless steel 1/2", 1 x f exit 30°, m connection, 100 cm

Stainless Steel Connection Pipes 1/2" f/m

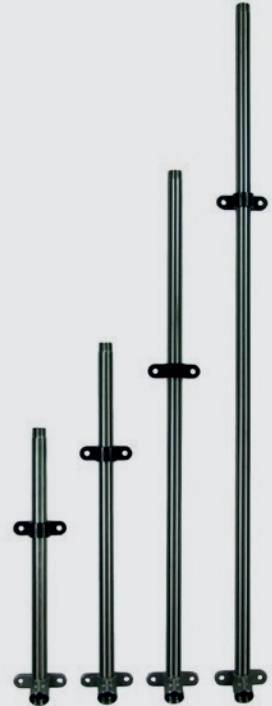
- Straight pipe made of stainless steel
- 1/2" female/male connection

Ref.	Type
103.1931	Connection pipe stainless steel 1/2", 50 cm, straight, f, m
103.1932	Connection pipe stainless steel 1/2", 75 cm, straight, f, m
103.1933	Connection pipe stainless steel 1/2", 100 cm, straight, f, m

Stainless Steel Connection Pipes 1/2" m/m

- Straight pipe made of stainless steel
- 1/2" female/male connection

Ref.	Type
103.1934	Connection pipe stainless steel 1/2", 25 cm, straight, m, m
103.1935	Connection pipe stainless steel 1/2", 35 cm, straight, m, m
103.1938	Connection pipe stainless steel 1/2", 10 cm, straight, m, m
103.1939	Connection pipe stainless steel 1/2", 15 cm, straight, m, m
103.1941	Connection pipe stainless steel 1/2", 50 cm, straight, m, m
103.1942	Connection pipe stainless steel 1/2", 75 cm, straight, m, m
103.1943	Connection pipe stainless steel 1/2", 100 cm, straight, m, m
103.1948	Connection pipe stainless steel 1/2", 125 cm, straight, m, m
103.1949	Connection pipe stainless steel 1/2", 150 cm, straight, m, m





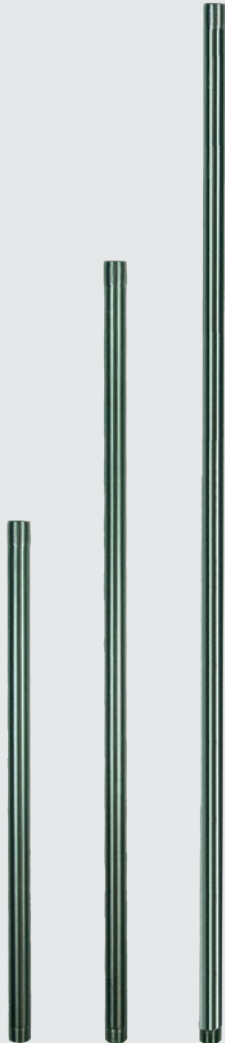
STAINLESS STEEL CONNECTION PIPES

Stainless Steel Connection Pipes 3/4"

m/m

- Straight pipe made of stainless steel
- 3/4" female/male connection

Ref.	Type
103.1993	Connection pipe stainless steel 3/4", 10 cm, straight, m, m
103.1994	Connection pipe stainless steel 3/4", 15 cm, straight, m, m
103.1995	Connection pipe stainless steel 3/4", 50 cm, straight, m, m
103.1996	Connection pipe stainless steel 3/4", 75 cm, straight, m, m
103.1997	Connection pipe stainless steel 3/4", 100 cm, straight, m, m
103.1998	Connection pipe stainless steel 3/4", 125 cm, straight, m, m
103.1999	Connection pipe stainless steel 3/4", 150 cm, straight, m, m





ACCESSORIES FOR INSTALLATION

Fixing Clips in Stainless Steel

- For fixation of plastic pipes

Ref.	Type
103.0910	Stainless steel fixing clip 1"
103.0912	Stainless steel fixing clip ½"
103.0934	Stainless steel fixing clip ¾"



Protection Plate, galvanized

Ref. 103.1957

- Protection plate for tubes
- Galvanized steel
- Length x width x height: approx. 100 x 11 x 8 cm

Protection Plate, Stainless Steel

Ref. 103.1958

- Protection plate for tubes
- Made of stainless steel
- Length x width x height: approx. 100 x 21,5 x 6 cm



103.1957

103.1958



FITTINGS



Fittings made of plastic

Ref.	Type	
103.0010	Elbow 90°	1"
103.0012	Elbow 90°	1/2"
103.0034	Elbow 90°	3/4"
103.0110	T-Piece 90°	1"
103.0112	T-Piece 90°	1/2"
103.0134	T-Piece 90°	3/4"
103.0234	T-Reducer 90°	3/4" x 1/2" x 3/4"
103.0334	Reducer	3/4" m x 1/2" f
103.0335	Reducer	1" m x 1/2" f
103.0336	Reducer	1" m x 3/4" f
103.0410	Coupling	1"
103.0412	Coupling	1/2"
103.0434	Coupling	3/4"
103.0510	Cap	1"
103.0512	Cap	1/2"
103.0534	Cap	3/4"
103.0710	Union	1"
103.0712	Union	1/2"
103.0734	Union	3/4"
103.0810	Double Nipple	1"
103.0812	Double Nipple	1/2"
103.0834	Double Nipple	3/4"
103.1610	Pipe clip	1"
103.1612	Pipe clip	1/2"
103.1634	Pipe clip	3/4"



Fittings made of stainless steel

Ref.	Type	
103.2010	Elbow 90°, female/female	1"
103.2012	Elbow 90°, female/female	1/2"
103.2034	Elbow 90°, female/female	3/4"
103.2035	Elbow 90°, male/female	3/4"
103.2036	Elbow 90°, male/female	1"
103.2037	Elbow 90°, male/female	1/2"
103.2110	T-Piece 90°	1"
103.2112	T-Piece 90°	1/2"
103.2134	T-Piece 90°	3/4"
103.2115	T-Reducer 90°	3/4" x 1/2" x 3/4"
103.2116	T-Reducer 90°	1" x 3/4" x 1"
103.2334	Reducer	3/4" m x 1/2" f
103.2335	Reducer	1" m x 1/2" f
103.2336	Reducer	1" m x 3/4" f
103.2410	Coupling	1"
103.2412	Coupling	1/2"
103.2434	Coupling	3/4"
103.2510	Cap	1"
103.2512	Cap	1/2"
103.2534	Cap	3/4"
103.2710	Union	1"
103.2712	Union	1/2"
103.2734	Union	3/4"
103.2810	Double Nipple	1"
103.2812	Double Nipple	1/2"
103.2834	Double Nipple	3/4"
103.2919	Reducing Coupling	3/4" f x 1/2" f
103.2920	Reducing Coupling	1" f x 3/4" f



SUEVIA



Ladd's

Official UK SUEVIA distributor

Ladd's, Belle Vue, Clunderwen, Pembrokeshire, Wales. SA66 7NQ.



01437 563217



sales@suevia.co.uk



suevia.co.uk

Edition 01.2026